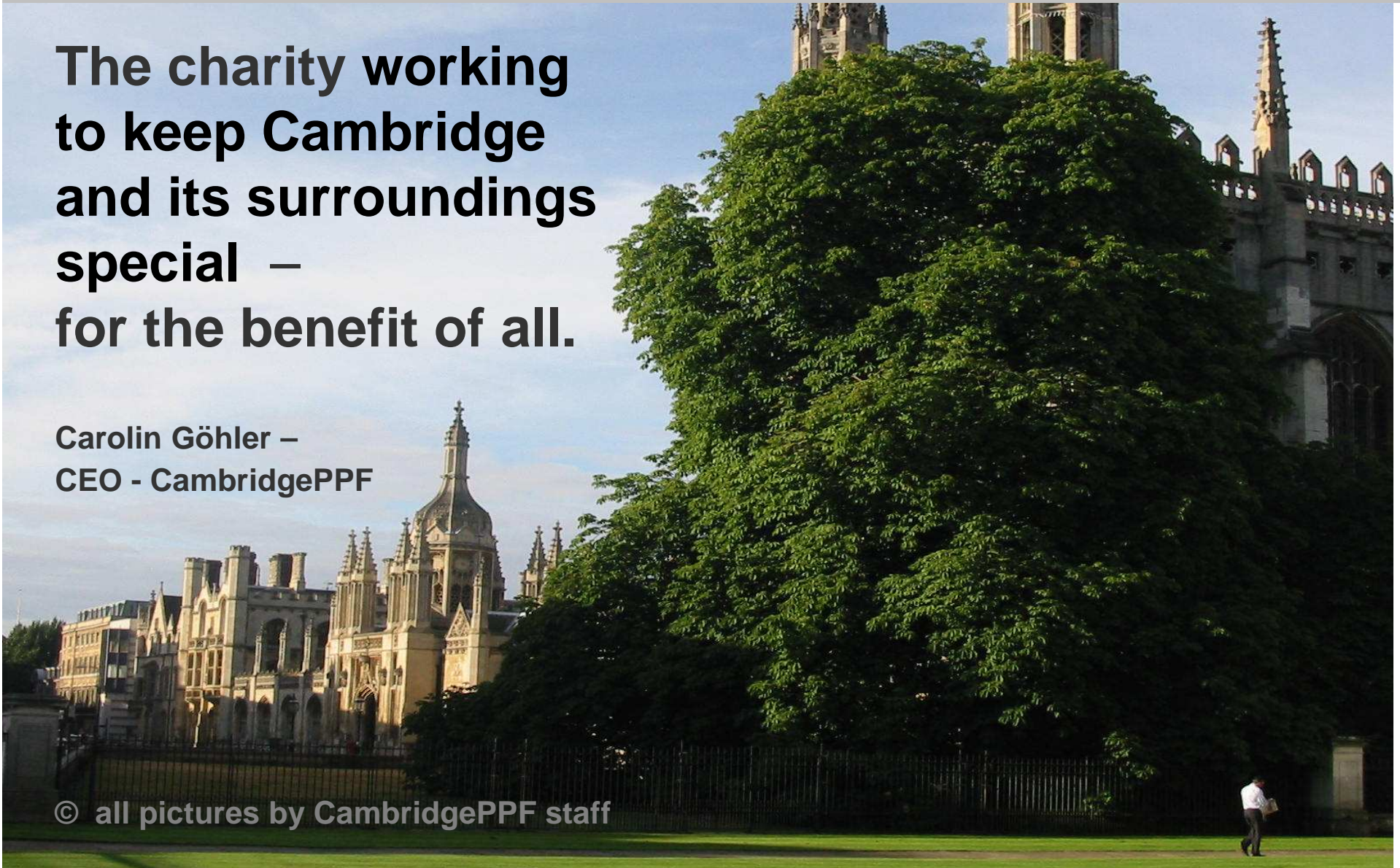


Cambridge Past, Present & Future

**The charity working
to keep Cambridge
and its surroundings
special –
for the benefit of all.**

**Carolin Göhler –
CEO - CambridgePPF**

© all pictures by CambridgePPF staff





CIVIC VOICE - Supports development of a Smart State:

- Establish a level of **expectation** for policy outcomes
- Provide and encourage the necessary **evidence** base
- Grant necessary **powers**
- Provide **incentives** for action
- Offer **support** for implementation

Key measures for the Department for Transport

- Street clutter
- Managing Traffic
- Supporting good action



Love Local Campaign – survey results so far

1. Lots of open space and gardens
2. Having a natural setting and views
3. A friendly and spirited community
4. Well cared for historic buildings
5. A range of cultural and community activities

Love Local will reveal what makes them distinctive and you proud to live there.

Historic Environment / Conservation Areas - Some of the recent local concerns in Cambridge

- tree management within inner city parks
- loss of traditional paving slabs in historic streets or new lifts in old buildings due to requirements under DDA
- tall buildings and the historic core
- general traffic and traffic calming
- street clutter issues
- impact of new larger urban extension within and to edge of City on the historic environment/ core and green spaces; impact of infill developments
- cycle routes through local parks including adverse impact on Registered Historic Parks & Gardens
- loss of quality old furnishings & effect on street scene
- loss of distinctiveness and community facilities including inappropriate infill buildings or demolition of traditional yards, pubs etc



What CambridgePPF does:

- influences planning process
 - champions green / open spaces & communities
 - builds public awareness about what is being planned
-
- manages Wandlebury and Coton Countryside Reserve and provide Ranger Service for others
 - protects historic buildings in our care
 - runs major environmental education programme
 - hold events at each property in its care.

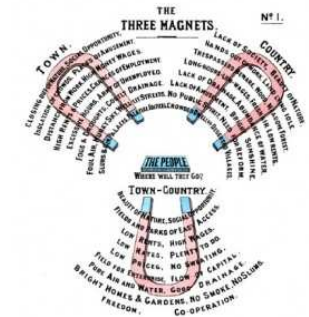
What CambridgePPF does:

- Local independent planning watch-dog: commenting on local, regional and at times national planning policies and planning applications
- recent decade concentrating on green spaces and quality
- participating at the City Council's Design and Conservation Panel
- last 3 years re-focussed the Society's planning committee
- creation of the Heritage Working group to focus on historic built environment and Historic Parks & Gardens
- undertaking educational and networking events for local people
- re-launched the Society last year to better engage with younger generation and to foster more support from local community (incl Residents Assoc, Parish Councils, local councillors)
- increased media presence & improved membership journal
- involvement with East of England Civic Societies to share information
- supporting national organisations such as Civic Voice, Open Space Campaign ... etc



Other Civic Societies of the Region do:

- Norwich undertakes inner city regeneration with Heritage Economic and Regeneration Trust – HEART
- Planning policy review – local and wider
- City centre management – forum and events
- Design awards
- Environmental audits / streetscape analysis – street clutter - save our streets campaign – new street furniture campaigns
- Night time economy
- Village audits and village design statements – ditto city quarters
- Conservation area research – campaigns: loss of heritage & quality
- Public art - public clocks - blue plaques
- heritage education – talks & walks – visit of other Civic Societies - pamphlets – websites and membership bulletins
- Trees and green spaces
- River corridor improvements
- Varies heritage interpretation & museum – education profile
- The future – visions of quality and overall enhancement of heritage environment



Conservation Areas



- One CA at risk even in Cambridge
- Local community including residents association, local businesses and individuals working together to improve area
- Nearby major housing development may not bring massive benefits to the historic core of the village as originally expected
- City Council - Recent major review of existing and establishing new/ extended Conservation Area Boundaries
- City Council – work on major approach roads to city

Impact of new development

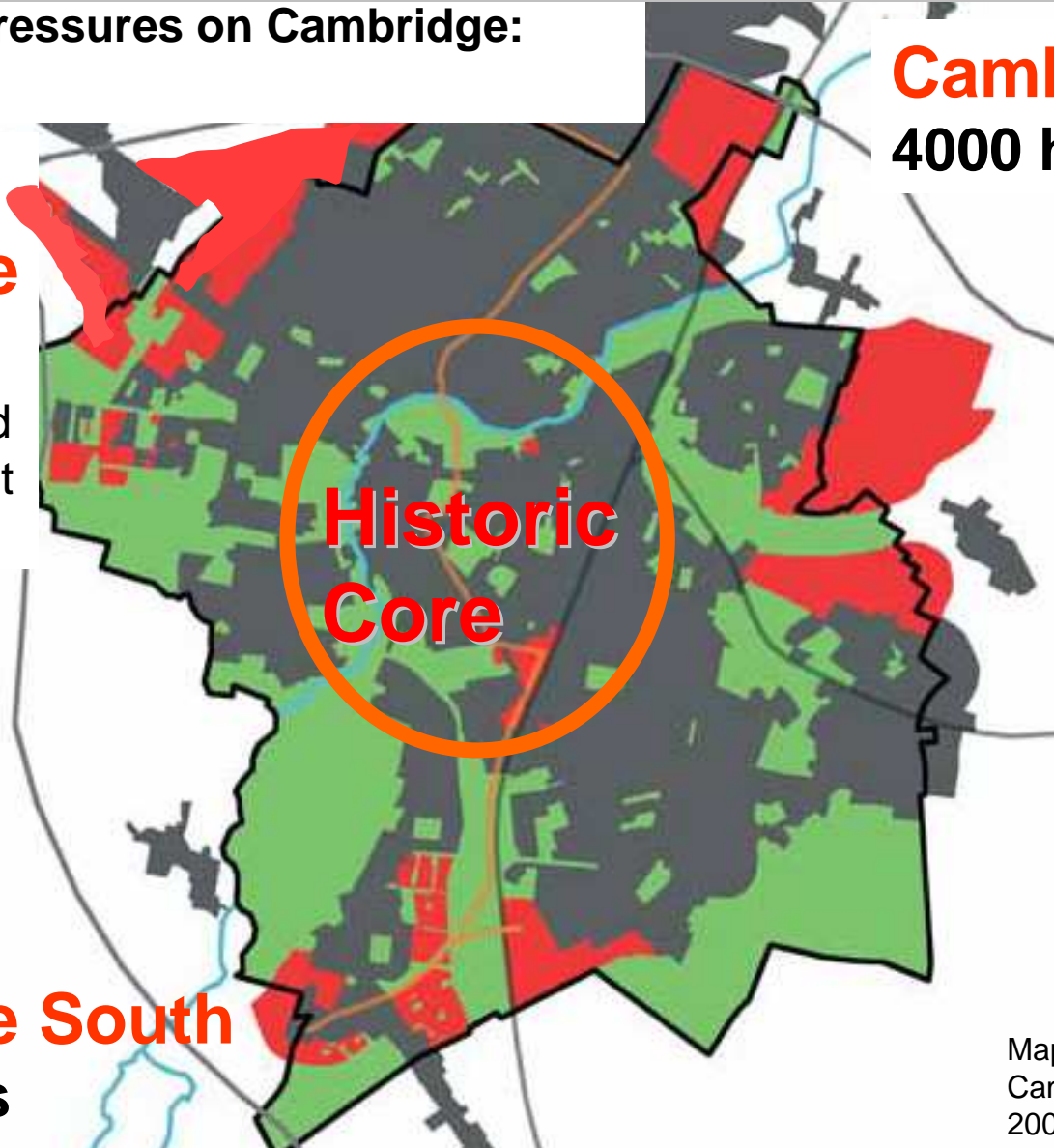
Development Pressures on Cambridge:
up to 2021

**NW
Cambridge**
5,500
dwellings - mixed
research, student
and residential

Cambridge North
4000 homes

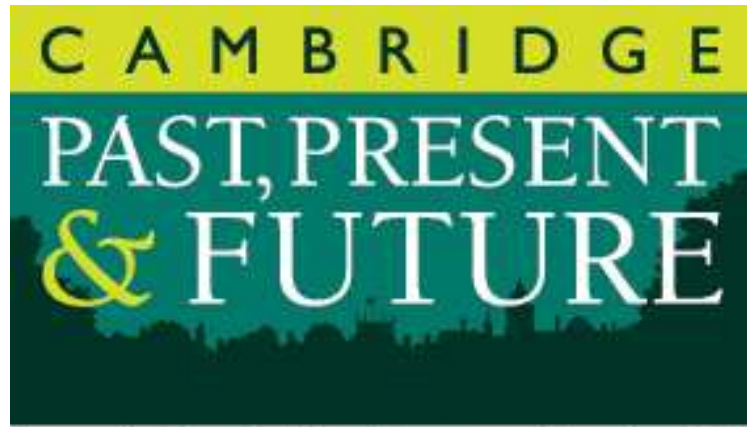
**Cambridge
East**
Marshalls Airport
12,000+
homes

Cambridge South
4,200 homes



What Can You Do About It?

- become aware about what is being planned
- get involved: **let your voice be heard**
- support your local residents association, civic trust to enable more leverage to influence plans and make use of opportunities
- liaise with and lobby your local councillors
- recent changes in Government will mean that local efforts only will benefit local communities
- **We all need to work harder – together!**



Formerly Cambridge Preservation Society



Cambridge Past, Present & Future —

a charity working to keep Cambridge and its surroundings special by positively influencing planning developments, delivering environmental education and managing the green spaces and historic buildings in its care — for the benefit of all.

Registered Charity No. 204121. Non-profit making company limited by guarantee, registered in England No. No 23983.